



Planar DirectLight X LED Video Wall System



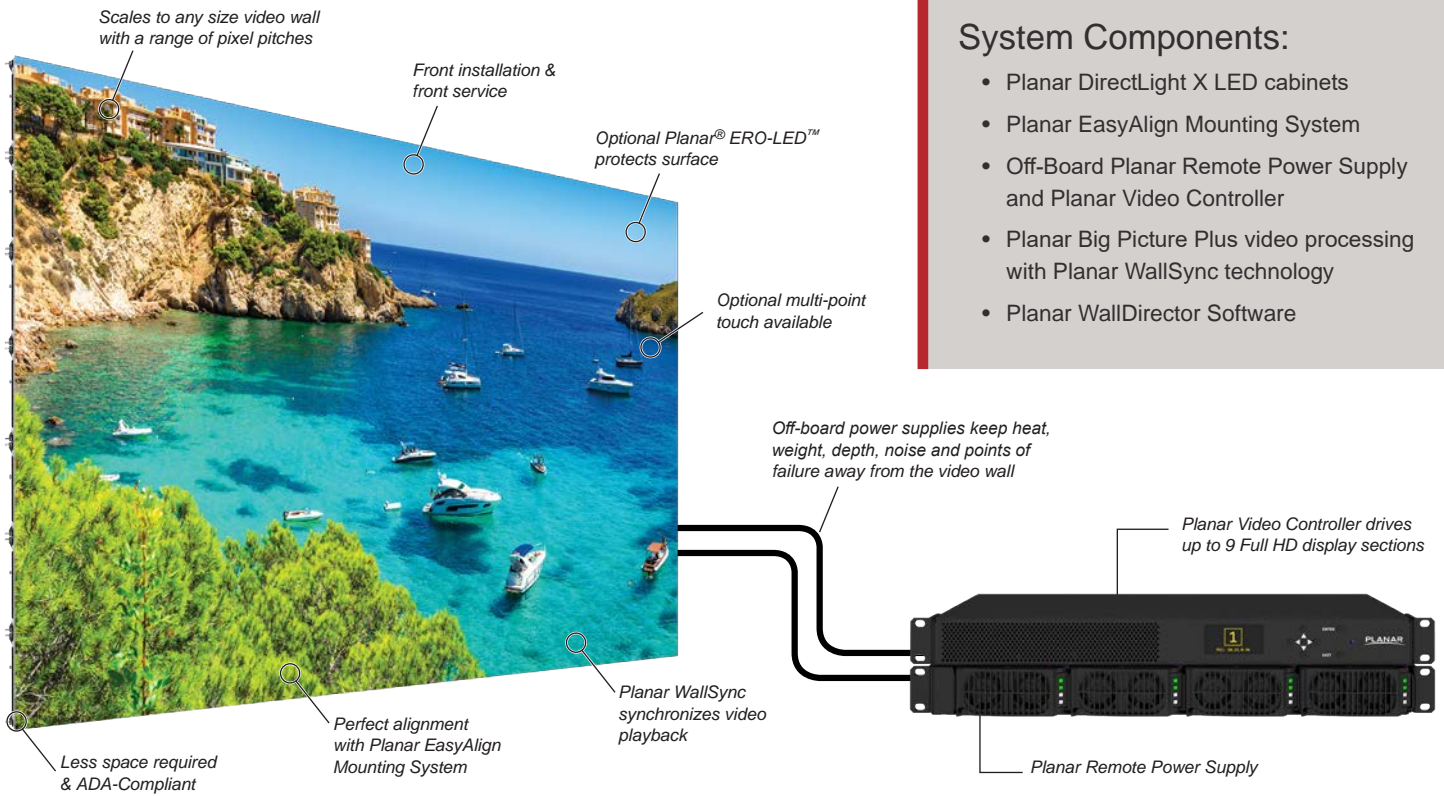
Next-Generation LED Video Wall Solution

The next-generation Planar® DirectLight® X Series LED video wall expands the award-winning Planar® DirectLight® LED Video Wall System platform to deliver the ultimate complete LED video wall solution. With the off-board Planar® Video Controller, Planar DirectLight X becomes the industry's first LED video wall solution to embed advanced video processing directly into the product.

Planar DirectLight X delivers a complete solution with an off-board video controller, off-board hot-swap power supplies, industry-leading wall mount, a fine pixel pitch cabinet with full front service access, as well as modern, web-based control and management software.

Unique Architecture for a True All-In-One Solution

Engineered by LED video wall experts, Planar DirectLight X's next-generation design addresses the challenges and unique benefits of fine pitch LED. The architecture addresses mounting, alignment, reliability, fault-tolerance, fast service, power efficiency, scalability and long life, resulting in superior visual performance and value to the customer.



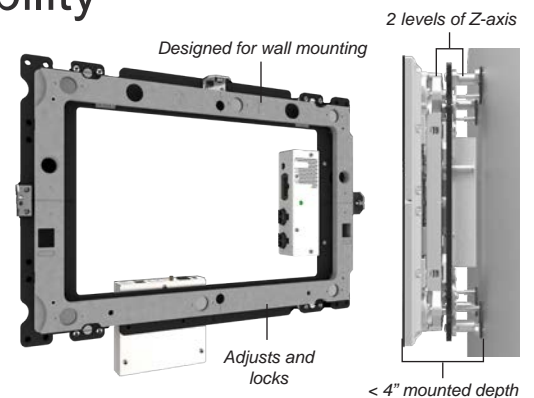
System Components:

- Planar DirectLight X LED cabinets
- Planar EasyAlign Mounting System
- Off-Board Planar Remote Power Supply and Planar Video Controller
- Planar Big Picture Plus video processing with Planar WallSync technology
- Planar WallDirector Software

Precision Alignment and Front Serviceability

The Planar® EasyAlign™ Mounting System simplifies installation, alignment and servicing of Planar DirectLight X LED video walls and features:

- An exceedingly thin <4" (<100mm) profile depth
- Perfect adjustment with six-axis alignment features
- Front service accessibility to all video wall system components
- Positive locking features for LED cabinet stability
- Flexible install options, including forward tilt (up to 10°), 90° corner installations and faceted curved video walls

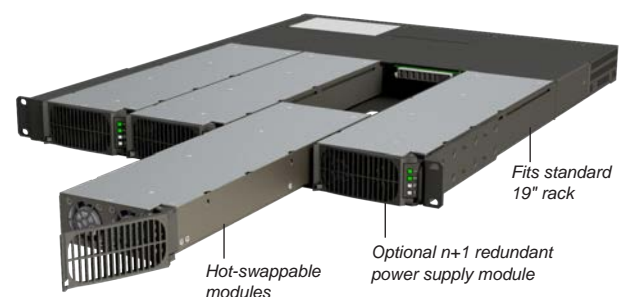


Mission Critical Design

The Planar® Remote Power Supply delivers mission-critical reliability with:

- 24x7 operation
- Hot-swappable Remote Power Supply Modules
- Low power standby mode
- Redundant AC input circuitry
- Reduced thermal stress, health and status monitoring capabilities
- Optional n+1 redundant power supply module

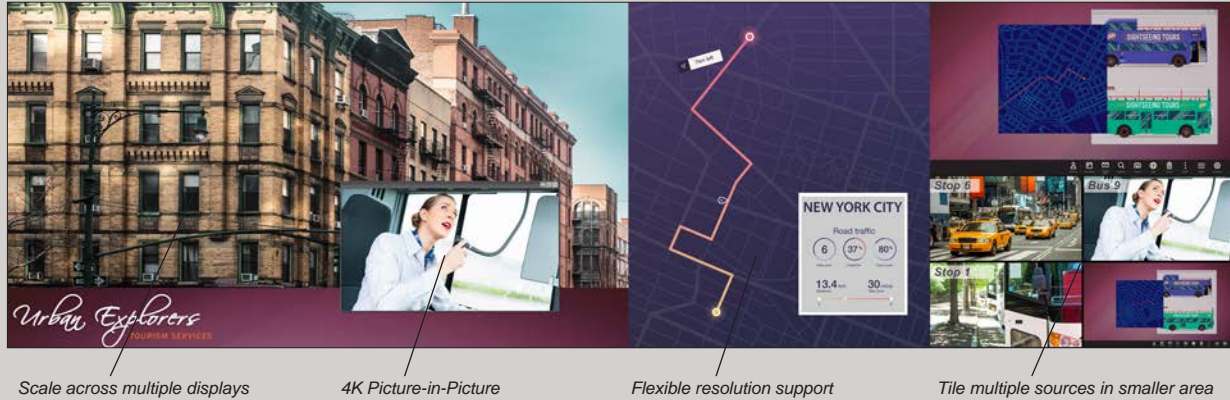
For government and military customers delivering highly sensitive information, Planar DirectLight X offers a Fiber Video Extension option—a more secure and longer distance option for extending the video signal.



Advanced Video Wall Processing

Planar DirectLight X delivers extensive and flexible video wall processing options to display sources on the video wall. With Planar® Big Picture Plus™ Video Wall Processing, users can scale sources across the entire video wall or any section of the video wall and use high resolution content, up to 4K, to be spread over multiple sections at native resolution

Solving a range of video wall genlock and synchronization challenges, Planar DirectLight X includes Planar® WallSync™ genlock technology. Smart Genlock automatically ensures perfectly synchronized video playback without manual configuration.



Scale across multiple displays

4K Picture-in-Picture

Flexible resolution support

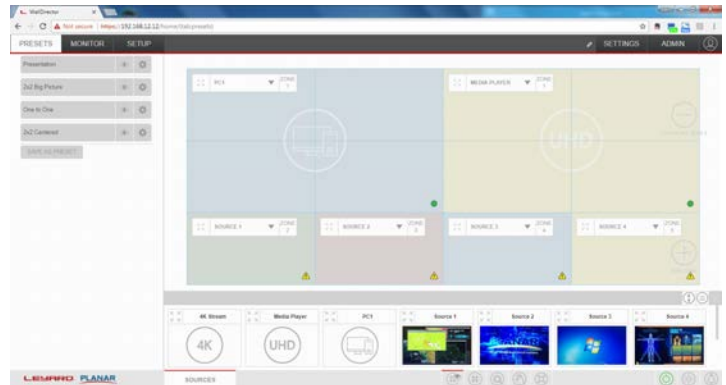
Tile multiple sources in smaller area

Planar WallDirector Software

Planar DirectLight X features Planar® WallDirector™ Software, an intuitive and powerful software tool to simplify video wall installation, configuration and operation.

The Planar WallDirector Software allows users to:

- Set-up & configure a video wall
- Capture the health status of video wall components in a centralized, convenient location
- Recall windowing layouts via simple, one-button presets
- Drag & drop sources on the video wall canvas
- Easily manipulate the window size & position



Ultra-High Resolution

Planar DirectLight X LED cabinets deliver a 16:9 aspect ratio and precise pixel pitch values that ensure it achieves exact Full HD, 4K or 8K resolutions.



Video Wall Resolution												
Models	1 x 1	2 x 2	3 x 3	4 x 4	5 x 5	6 x 6	7 x 7	8 x 8	9 x 9	10 x 10	11 x 11	12 x 12
DLX-0.9	640 x 360	1280 x 720	1920 x 1080	2560 x 1440	3200 x 1800	3840 x 2160	4480 x 2520	5120 x 2880	5760 x 3240	6400 x 3600	7040 x 3960	7680 x 4320

Video Wall Size (WxH)												
Feet (ft)	2.0 x 1.1	3.9 x 2.2	5.9 x 3.3	7.9 x 4.4	9.8 x 5.5	11.8 x 6.6	13.8 x 7.7	15.7 x 8.9	17.7 x 10	19.7 x 11.1	21.6 x 12.2	23.6 x 13.3
Meters (m)	0.6 x 0.34	1.2 x 0.67	1.8 x 1.0	2.4 x 1.3	3 x 1.6	3.6 x 2.0	4.2 x 2.3	4.8 x 2.7	5.4 x 3.0	6 x 3.3	6.6 x 3.7	7.2 x 4.0
Area (sqm)	0.20	0.81	1.82	3.24	5.06	7.29	9.92	12.96	16.40	20.25	24.50	29.16
Diagonal	27"	54"	81"	108"	136"	163"	190"	217"	244"	271"	298"	325in

PLANAR DIRECTLIGHT X LED VIDEO WALL SYSTEM SPECIFICATIONS

Model	DLX-0.9	DLX-1.2
Pixel Pitch	0.9375mm	1.25mm
Display Resolution	640 x 360	480 x 270
Pixel Density (pixels)	1,137,777/m ² 105,703/ft ²	640,000/m ² 59,458/ft ²
Brightness Max (cd/sq. m)	>800	
LED surround	Black Solder Mask	
Color Gamut	100% NTSC	
Contrast Ratio	>6,000:1	
LED Refresh Rate	1,920Hz	3,000Hz
Color Temperature, Adjustable (k)	3,200 - 9,300	
Viewing Angles	160°, Horizontal 140° Vertical	
Display Size (W x H x D)	600 x 337.5 x 95mm 23.62 x 13.28 x 3.74in	
Mounted Depth	< 4", ADA-Compliant	
Display Weight (kg/display)	6.6kg 14.5lb	
Mount Weight per Display (kg/display)	3.2kg 7lb	
Power Consumption, Max (watts)	150/Display 741/m ²	
Acoustic Noise	Fanless Operation	
Operating Temperature (°F/C) 10-80% relative humidity, non-condensing	-10° to 40° C -14° to 104° F	
Wall Mount	Planar EasyAlign Mounting System with 6-axis adjustment	
Installation and Service Access	Front	
Installation Options	Corner Installation: 90° corner, 15mm seam Forward Tilt: up to 10° Concave Curve: up to 30° facets 920Hz	
Regulatory Compliance	NRTL UL 60950-1, FCC Class A, CE EN60950-1, EN 55032 Class A and EN55024, WEEE, CISPR 32/2015	

PLANAR REMOTE POWER SUPPLY

Model	RPS110	RPS220
Type	1RU rack mount; 19" rack	1.5RU rack mount; 19" rack
Line Voltage	100-240 Volts AC autoranging	200-240 Volts AC autoranging
Power Output	1200W per output	
Power Supply Configurations	1, 2 or 3 outputs	2, 4 or 6 outputs
Redundancy	n + 1 redundant option	
Hot Swap	Supported for each power supply module	
Low Power Standby Mode	<3W in standby mode	
Power Status	Diagnostic LEDs per power supply module	
Maximum Distance from Video Wall	200ft (61m) standard, 500ft (152.4m) maximum	

VIDEO CONTROLLER

Type	1U rack mount controller drives up to 9 Full HD (1920x1080) sections
Video Inputs	4x HDMI 2.0 (w/ HDCP 2.2); 1x DisplayPort 1.2
Video Outputs	9-Output Controller: 9x RJ45 8P8C, 1x DisplayPort 1.2 4-Output Controller: 4x RJ45 8P8C, 1x DisplayPort 1.2
Image Scaling	Planar Big Picture Plus Processing, Planar WallSync, PiP, 4K at 60Hz upscaling and downscaling
Control	IR Remote Control, RS-232, USB, Network, Planar WallDirector Software
Controller Status	Diagnostic LEDs, health monitoring and alerts
Maximum Distance from Wall	200ft (60m)

FIBER VIDEO EXTENSION MODULE OPTION

Type	1U rack mount module drives up to 4 Full HD (1920x1080) sections
Fiber Optic Connection Type	SFP multi-mode transceivers supports distances up to 1000ft (300m) from video wall. Compatible with single-mode transceivers supporting up to 10k from the wall. (Single-mode transceivers not provided)
USB Extension	USB-B at module; USB-A at panel
IR Remote Extension	Embedded
Power	AC Power Adapter; 100-240V AC ± 10%, 47 to 63 Hz; 50W